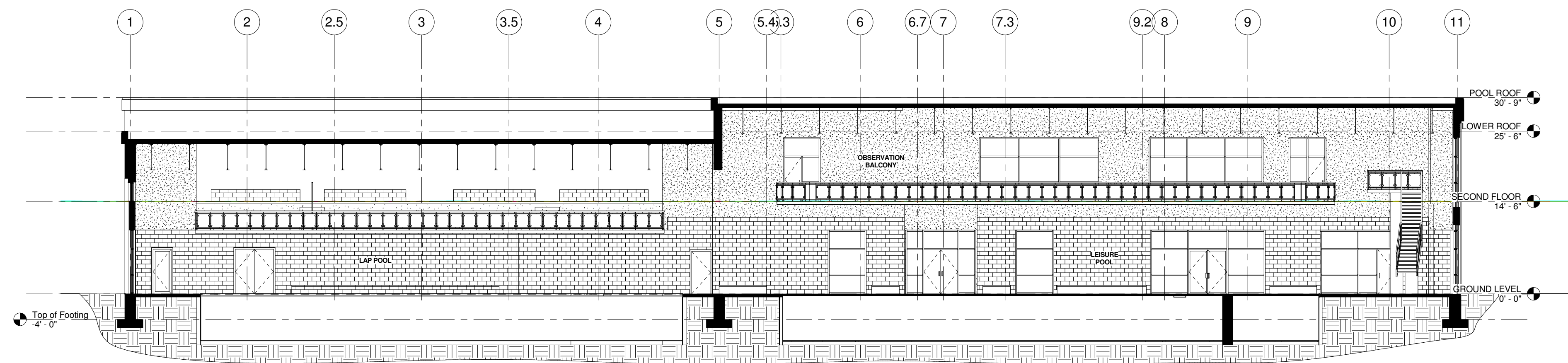


2 Building Section  
1/8" = 1'-0"



1 Building Section 2  
1/8" = 1'-0"

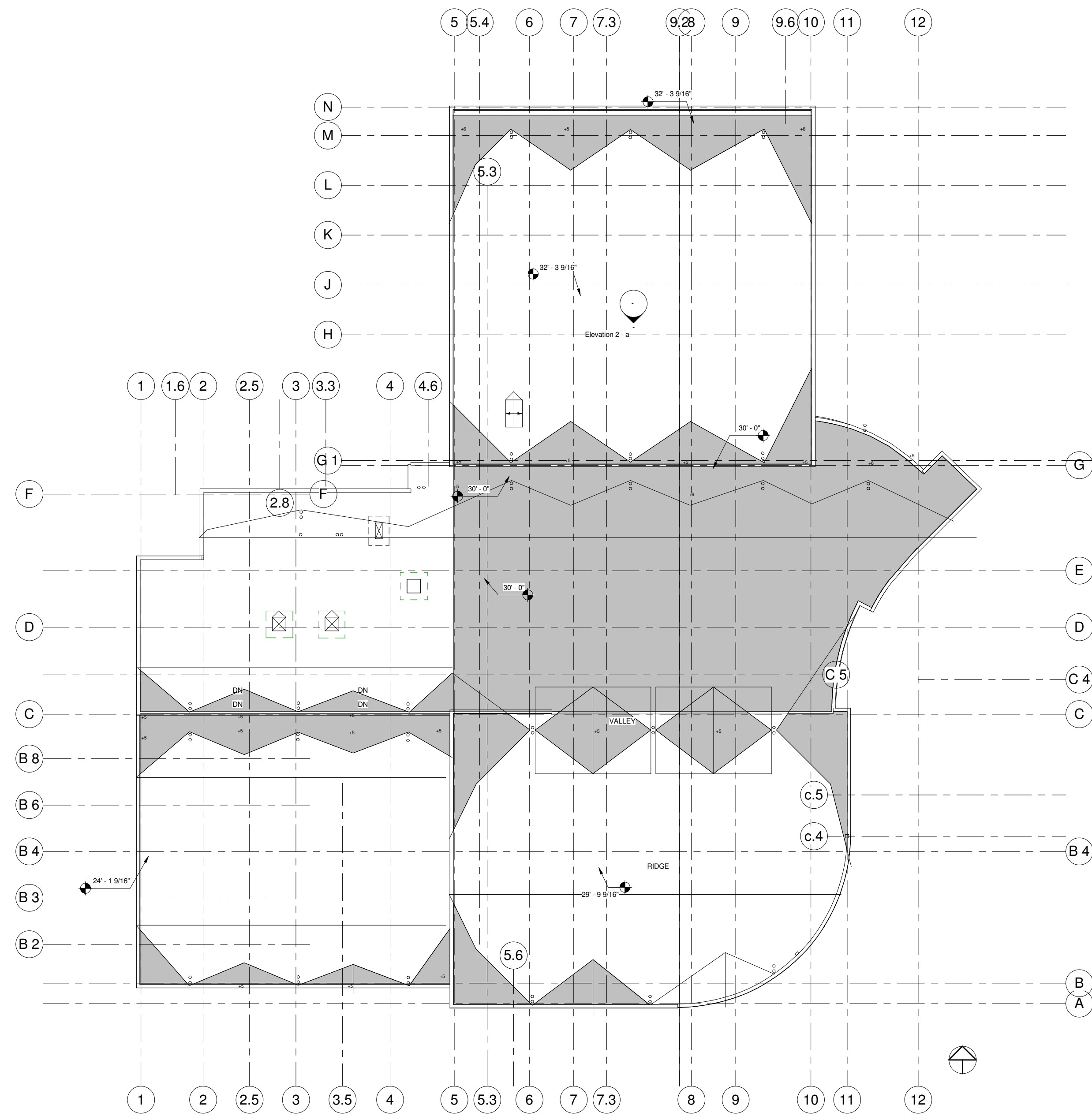
"A+ Or Better"  
DesignTeam  
BYU-IDAHO  
235 RINKS AVE  
RENO, NEVADA 89502  
TEL: 425-351-0418

PROJECT NUMBER:  
Project Number 1  
DATE: 06/03/11  
DRAWN BY: Author  
CHECKED BY: Checker

**NORTHWEST RECREATION  
CENTER**  
BIM MODELING CLASS

**BUILDING  
SECTIONS**

DRAWING  
A401



Room Schedule					
Name	Floor Finish	Wall Finish	Area	Ceiling Finish	Comments
PROGRAM MANAGER			175 SF		
COORD ROOM			109 SF		
WORK ROOM			291 SF		
COORD ROOM			107 SF		
WOMENS			47 SF		
MEN			48 SF		
RESTROOM			55 SF		
LIFEGUARD BREAKROOM			164 SF		
TELECOM FAMILY	Ceramic Tile	Gypsum	71 SF		
FAMILY	Ceramic Tile	Gypsum	100 SF		
AQUATIC ROOM		Gypsum	99 SF		
COORD			136 SF		
GYMNASIUM	Wood	CMU	10560 SF		
LEISURE POOL	Finished Concrete	CMU	Not Enclosed		
LAP POOL	Finished Concrete	CMU	Not Enclosed		
STORAGE	Finished Concrete	Gypsum	395 SF		
ELECTICAL	Finished Concrete	CMU	307 SF		
SURGE	Finished Concrete	CMU	295 SF		
PUMP PIT	Finished Concrete	CMU	520 SF		
Room		Gypsum	Not Placed		
FIRST AID	Finished Concrete	Gypsum	95 SF		
CHASE		Gypsum	20 SF		
JANITOR	Finished Concrete	Gypsum	189 SF		
ELEV EQUIP	Finished Concrete	CMU	72 SF		
ELEV	Finished Concrete	CMU	48 SF		
VESTIBULE		Gypsum	202 SF		
LOBBY		Gypsum	2023 SF		
INFO		Gypsum	162 SF		
HALLWAY		Gypsum	89 SF		
LAUNDRY	Finished Concrete	Gypsum	69 SF		
Room		Gypsum	17 SF		
WET CLASS PARTY ROOM	Ceramic Tile	Gypsum	421 SF		
STORAGE		Gypsum	58 SF		
DROP-IN CHILD CARE		Gypsum	609 SF		
HALLWAY		Gypsum	472 SF		
HALLWAY		Gypsum	750 SF		
STAIRS		Gypsum	173 SF		
WOMENS	Ceramic Tile	Gypsum	1146 SF		
MENS	Ceramic Tile	Gypsum	1117 SF		
MECHANICAL		Gypsum	1738 SF		
POOL CHLORINE	Finished Concrete	CMU	94 SF		
POOL ACID	Finished Concrete	CMU	104 SF		
Room		Gypsum	360 SF		
FILTRATION	Finished Concrete	CMU	725 SF		
STAIR		CMU	226 SF		

"A+ Or Better"  
**DesignTeam**  
 BYU-IDAHO  
 235 RINKS AVE  
 PROVO, UT 84601  
 TEL: 435-391-0418

PROJECT NUMBER:  
 Project Number 1  
 DATE: 06/04/11  
 DRAWN BY: Author  
 CHECKED BY: Checker

**NORTHWEST RECREATION CENTER**  
 BIM MODELING CLASS

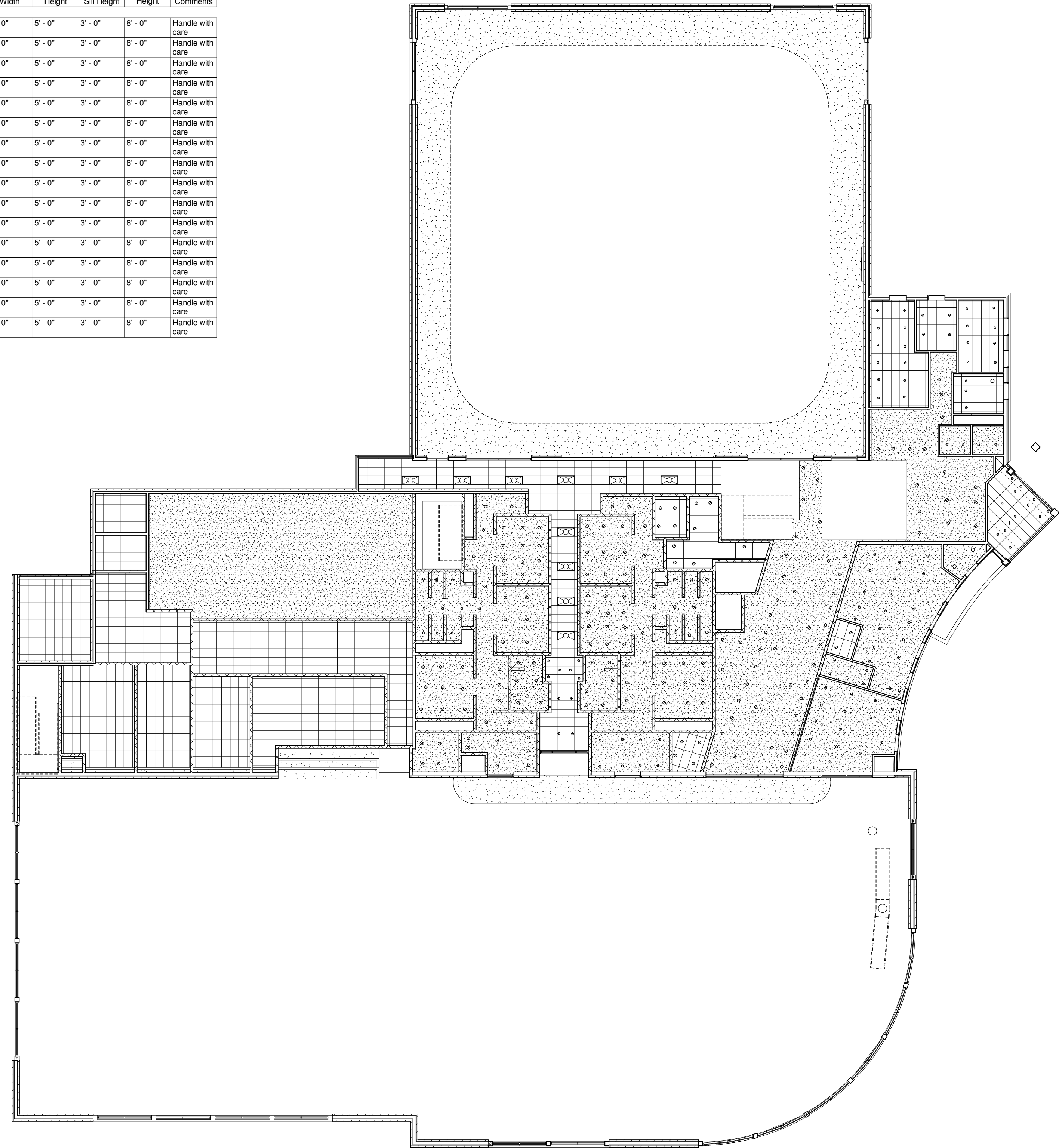
**ROOF PLAN**

DRAWING  
**A-102**



Door Schedule							
Mark	Height	Width	Finish	Frame Material	Type	Sill Height	Comments
1	6'-8"	2'-10"	Steel	Steel	34" x 80"	0'-0"	One Hour Fire Rating
2	7'-0"	3'-0"	Steel	Steel	36" x 84"	0'-0"	One Hour Fire Rating
3	7'-0"	3'-0"	Steel	Steel	36" x 84"	0'-0"	One Hour Fire Rating
4	7'-0"	3'-0"	STEEL	Steel	36" x 84"	0'-0"	One Hour Fire Rating
5	7'-0"	3'-0"	STEEL	Steel	36" x 84"	0'-0"	One Hour Fire Rating
6	7'-0"	3'-0"	STEEL	Steel	36" x 84"	0'-0"	One Hour Fire Rating
7	7'-0"	3'-0"	STEEL	Steel	36" x 84"	0'-0"	One Hour Fire Rating
8	7'-0"	3'-0"	STEEL	Steel	36" x 84"	0'-0"	One Hour Fire Rating
9	7'-0"	3'-0"	STEEL	Steel	36" x 84"	0'-0"	
10	7'-0"	3'-0"	STEEL	Steel	36" x 84"	0'-0"	
12	7'-0"	3'-0"	STEEL	Steel	36" x 84"	0'-0"	
13	7'-0"	3'-0"	STEEL	Steel	36" x 84"	0'-0"	
14	7'-0"	3'-0"	STEEL	Steel	36" x 84"	0'-0"	
15	7'-0"	3'-0"	STEEL	Steel	36" x 84"	0'-0"	
16	7'-0"	3'-0"	STEEL	Steel	36" x 84"	0'-0"	
17	7'-0"	3'-0"	STEEL	Steel	36" x 84"	0'-0"	
18	7'-0"	3'-0"	STEEL	Steel	36" x 84"	0'-0"	
	6'-10 3/4"	5'-11 1/16"	STEEL		Gym door		
	6'-10 3/4"	3'-2 1/4"	STEEL		Curtain Wall Sgl Glass		
	6'-10 3/4"	5'-11 1/2"	STEEL		Gym door		
	6'-10 3/4"	4'-7 7/32"	STEEL		Store Front Double Door		
	6'-10 3/4"	5'-6 25/32"	STEEL		Store Front Double Door		
23	7'-0"	3'-0"	STEEL		GYM GLASS DOOR	0'-0"	
	6'-10 3/4"	2'-7 7/32"	Glass	Steel	Curtain Wall Sgl Glass		
	6'-10 3/4"	2'-6 3/4"	Glass	Steel	Curtain Wall Sgl Glass		
	6'-10 3/4"	2'-7 31/32"	Glass	Steel	Curtain Wall Sgl Glass		
	6'-10 3/4"	5'-3 1/2"	Glass	Steel	Curtain Wall Dbl Glass		
	6'-10 3/4"	3'-2 1/4"	Glass	Steel	Curtain Wall Sgl Glass		
44	6'-6"	6'-0"	Steel	Steel	72" x 78"	0'-0"	
46	6'-8"	3'-0"	Steel	Steel	36" x 80"	0'-0"	One Hour Fire Rating
47	6'-8"	3'-0"			36" x 80"	0'-0"	
48	7'-0"	6'-0"			72" x 84"	0'-0"	
49	6'-8"	3'-0"			36" x 80"	0'-0"	
50	7'-0"	2'-10"			34" x 84"	0'-0"	
51	7'-0"	2'-10"			34" x 84"	0'-0"	
52	6'-8"	3'-0"			36" x 80"	0'-0"	
53	7'-0"	6'-0"			72" x 84"	0'-0"	
54	7'-0"	3'-0"			36" x 84"	0'-0"	
55	7'-0"	2'-10"			34" x 84"	0'-0"	
56	7'-0"	3'-0"			36" x 84"	0'-0"	
57	7'-0"	3'-0"			36" x 84"	0'-0"	
58	7'-0"	6'-0"			72" x 84"	0'-0"	
59	7'-0"	6'-0"	STEEL		72" x 84"	0'-0"	
60	6'-10 3/4"	3'-2 1/4"	STEEL		Curtain Wall Sgl Glass		
61	6'-10 3/4"	3'-2 1/4"	STEEL		Curtain Wall Sgl Glass		
62	7'-0"	6'-0"			72" x 84"	0'-0"	
63	6'-8"	3'-0"			36" x 80"	0'-0"	
64	6'-8"	3'-0"			36" x 80"	0'-0"	
65	6'-8"	3'-0"			36" x 80"	0'-0"	
66	7'-0"	3'-0"			36" x 84"	0'-0"	
67	7'-0"	3'-0"			36" x 84"	0'-0"	
68	7'-0"	3'-0"			36" x 84"	0'-0"	
69	7'-0"	3'-0"			36" x 84"	0'-0"	
70	7'-0"	3'-0"			36" x 84"	0'-0"	
71	7'-0"	3'-0"			36" x 84"	0'-0"	
72	6'-8"	3'-0"			36" x 80"	0'-0"	
73	6'-8"	3'-0"			36" x 80"	0'-0"	
74	6'-8"	3'-0"			36" x 80"	0'-0"	
75	6'-8"	3'-0"			36" x 80"	0'-0"	
76	6'-8"	3'-0"	STEEL		36" x 80"	0'-0"	
77	6'-8"	3'-0"	STEEL		36" x 80"	0'-0"	
78	6'-8"	3'-0"	STEEL		36" x 80"	0'-0"	
79	6'-10 3/4"	5'-11 3/16"	STEEL		Gym door		
80	6'-6"	6'-0"	STEEL		72" x 78"	0'-0"	
81	6'-6"	6'-0"	STEEL		72" x 78"	0'-0"	
82	6'-8"	2'-10"	STEEL		34" x 80"	0'-0"	
83	7'-0"	2'-10"	STEEL		34" x 84"	0'-0"	

Window Schedule						
Mark	Type	Width	Height	Sill Height	Head Height	Comments
1	4' X 5'	4'-0"	5'-0"	3'-0"	8'-0"	Handle with care
2	4' X 5'	4'-0"	5'-0"	3'-0"	8'-0"	Handle with care
3	4' X 5'	4'-0"	5'-0"	3'-0"	8'-0"	Handle with care
4	4' X 5'	4'-0"	5'-0"	3'-0"	8'-0"	Handle with care
5	4' X 5'	4'-0"	5'-0"	3'-0"	8'-0"	Handle with care
6	4' X 5'	4'-0"	5'-0"	3'-0"	8'-0"	Handle with care
7	4' X 5'	4'-0"	5'-0"	3'-0"	8'-0"	Handle with care
8	4' X 5'	4'-0"	5'-0"	3'-0"	8'-0"	Handle with care
9	4' X 5'	4'-0"	5'-0"	3'-0"	8'-0"	Handle with care
10	4' X 5'	4'-0"	5'-0"	3'-0"	8'-0"	Handle with care
11	4' X 5'	4'-0"	5'-0"	3'-0"	8'-0"	Handle with care
14	4' X 5'	4'-0"	5'-0"	3'-0"	8'-0"	Handle with care
15	4' X 5'	4'-0"	5'-0"	3'-0"	8'-0"	Handle with care
16	4' X 5'	4'-0"	5'-0"	3'-0"	8'-0"	Handle with care
17	4' X 5'	4'-0"	5'-0"	3'-0"	8'-0"	Handle with care
22	4' X 5'	4'-0"	5'-0"	3'-0"	8'-0"	Handle with care



1 FIRST FLOOR CEILING PLAN  
3/32" = 1'-0"

PROJECT NUMBER:  
Project Number 1

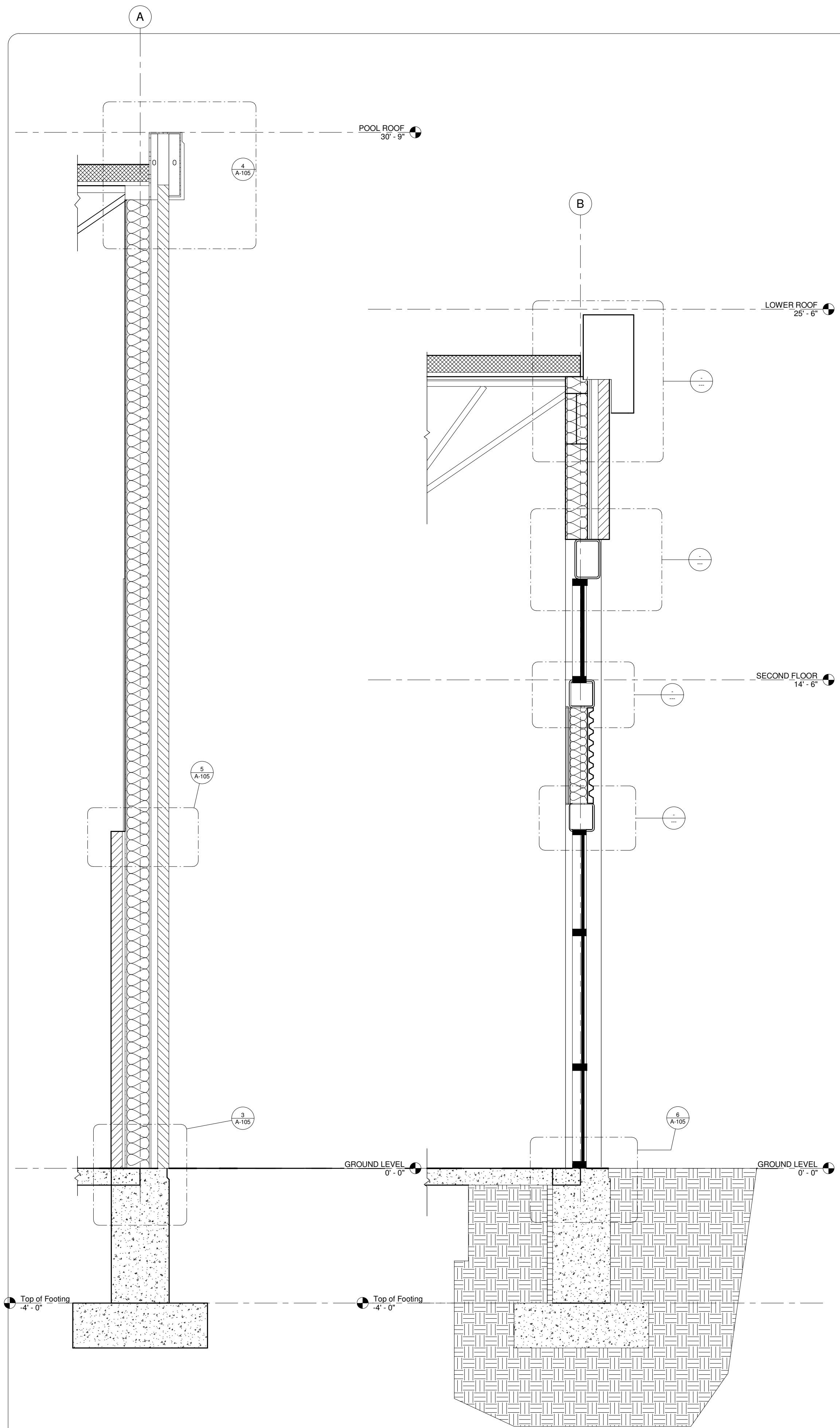
"A+ Or Better"  
DesignTeam  
BYU-IDAHO  
235 RINKS AVE  
RENO, NEVADA 89502  
TEL: 425-951-0418

DATE: 06/09/11  
DRAWN BY: Author  
CHECKED BY: Checker

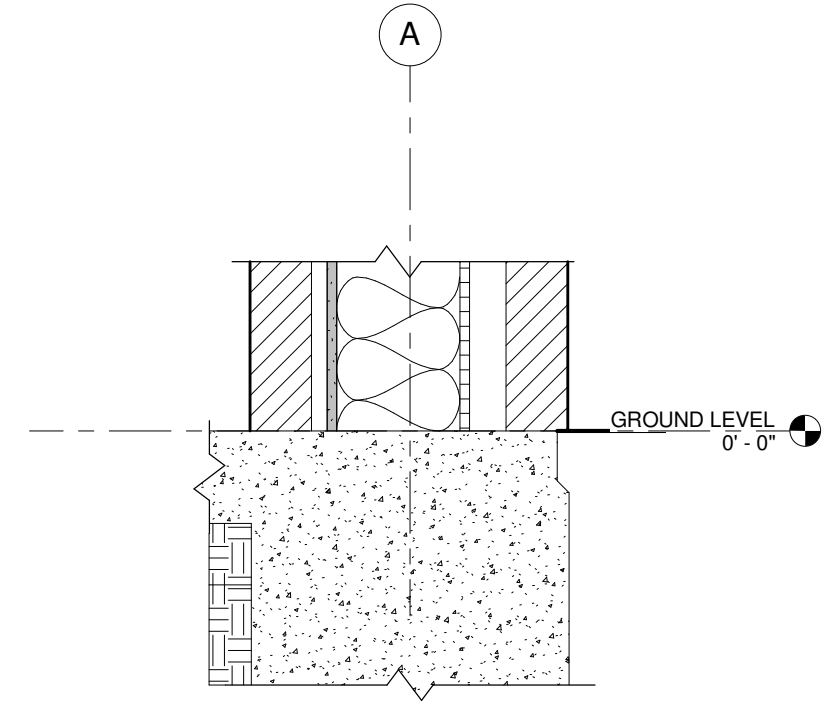
**NORTHWEST RECREATION CENTER**  
BIM MODELING CLASS

**CEILING PLAN**

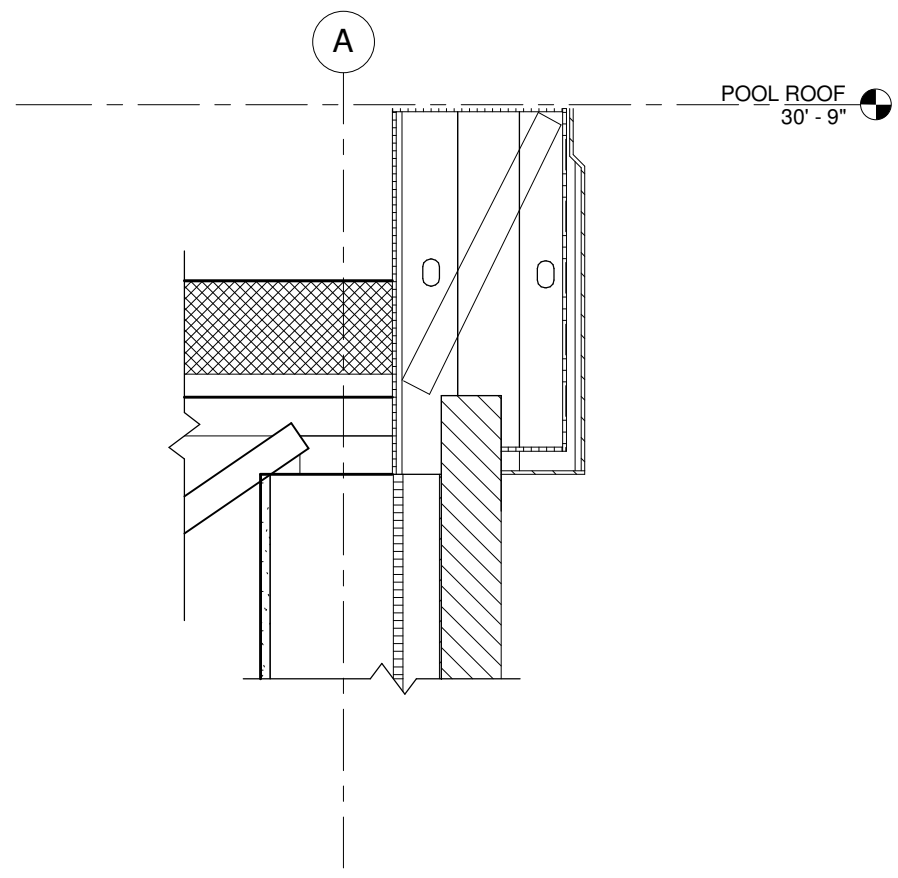
DRAWING  
**A-104**



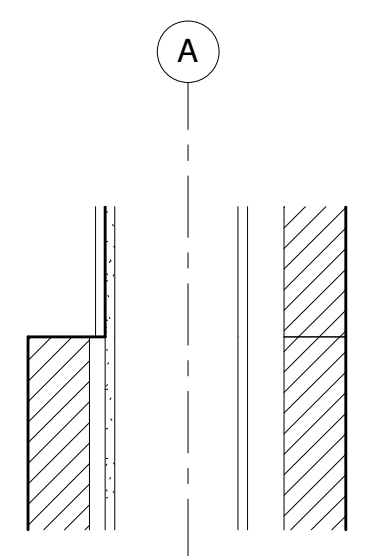
2 WALL SECTION 2  
3/4" = 1'-0"



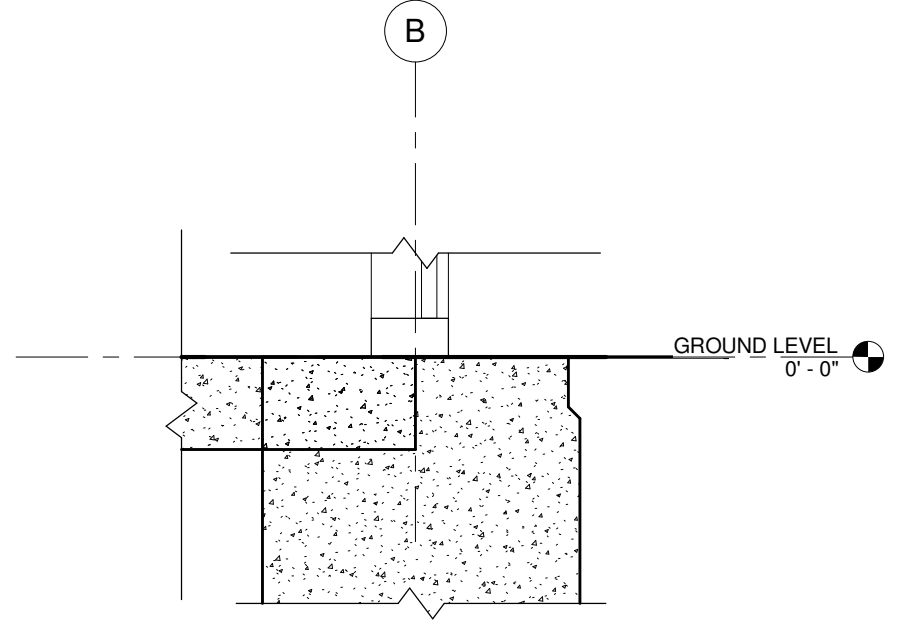
3 Callout (3) of WALL SECTION  
1 1/2" = 1'-0"



4 Callout (3) of WALL SECTION  
1 1/2" = 1'-0"



5 Callout (2) of WALL SECTION  
1 1/2" = 1'-0"



6 Callout (5) of WALL SECTION 2  
1 1/2" = 1'-0"

PROJECT NUMBER:  
Project Number 1

"A+ Or Better"  
DesignTeam  
BYU-IDAHO  
235 RINKS AVE  
REID HALL SUITE 100  
TEL: 425-551-0418

DATE:  
06/10/11

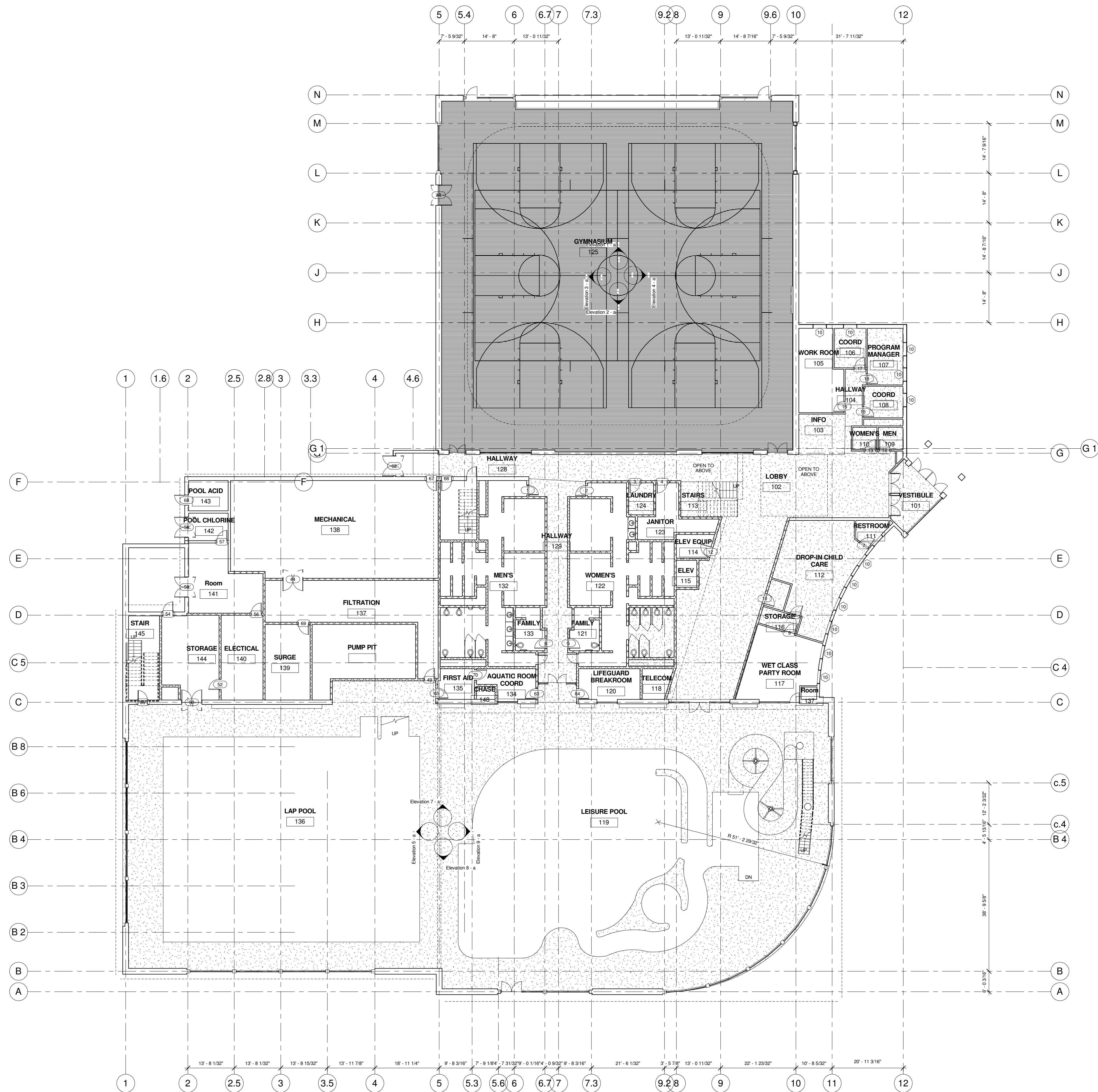
DRAWN BY:  
KRISTEN GARVIN

CHECKED BY:  
BRO. HUI SH

**NORTHWEST RECREATION  
CENTER**  
BIM MODELING CLASS

**WALL  
SECTIONS AND  
DETAILS**

DRAWING  
**A-105**



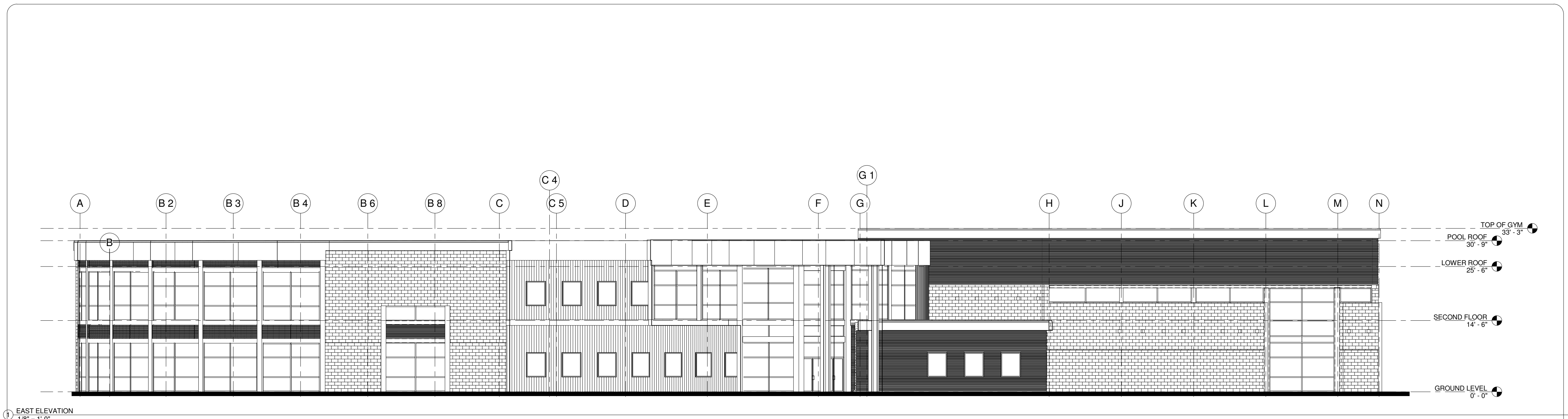
**"A+ Or Better"  
DesignTeam**  
BYU-IDAHO  
235 RINKS AVE  
REID HALL SUITE 100  
TEL: 435-351-0418

PROJECT NUMBER:  
Project Number 1  
DATE: 06/04/11  
DRAWN BY: Author  
CHECKED BY: Checker

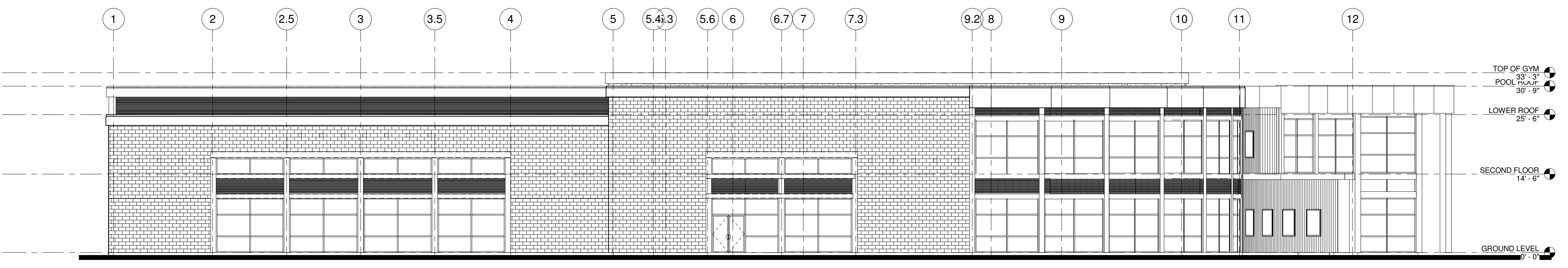
**NORTHWEST RECREATION  
CENTER**  
BIM MODELING CLASS

**FIRST FLOOR  
PLAN**

DRAWING  
**A-201**



1 EAST ELEVATION  
1/8" = 1'-0"



2 SOUTH ELEVATION  
1/8" = 1'-0"

"A+ Or Better"  
DesignTeam

BY IDAHO  
235 RINKS AVE  
RENO, NV 89501  
TEL: 425-351-0418

PROJECT NUMBER:	Project Number 1
DATE:	06/04/11
DRAWN BY:	Author
CHECKED BY:	Checker

**NORTHWEST RECREATION CENTER**  
BIM MODELING CLASS

**ELEVATIONS**

DRAWING  
**A-301**